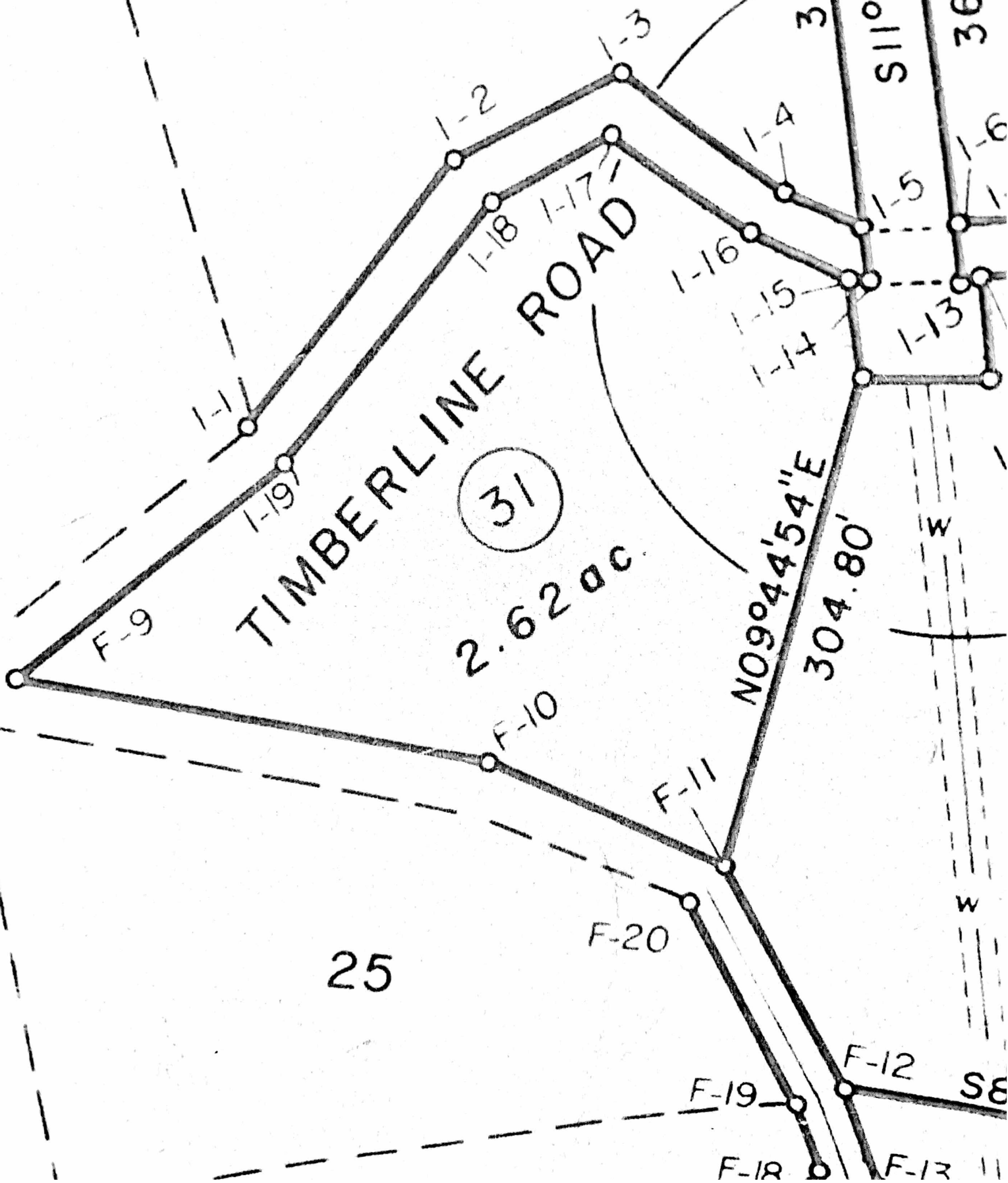


33



TIMBERLINE ROAD

31

2.62 ac

357.78'

$S11^{\circ}45'19''E$

368.02'S

$N09^{\circ}44'54''E$

304.80'

W

W

SE

F-9

1-19

1-2

1-18

1-17

1-16

1-15

1-14

1-13

1-5

1-6

F-11

F-20

F-19

F-18

F-12

F-13

25